



Ministerie van Binnenlandse Zaken en
Koninkrijksrelaties



Nieuws uit Europa: CPR Acquis

CPR Webinar

11 November 2020

Dirk Breedveld



CPR Acquis

Verbetering van het stelsel van wet- en regelgeving
onder de CPR

Law

Law is the system of
regulating the action
correct procedure
principles and reg
rules made by th
very



CPR Acquis

Opzet van alternatief systeem om volgens de Cie geharmoniseerde technische afspraken juridisch op orde te krijgen.





CPR Acquis

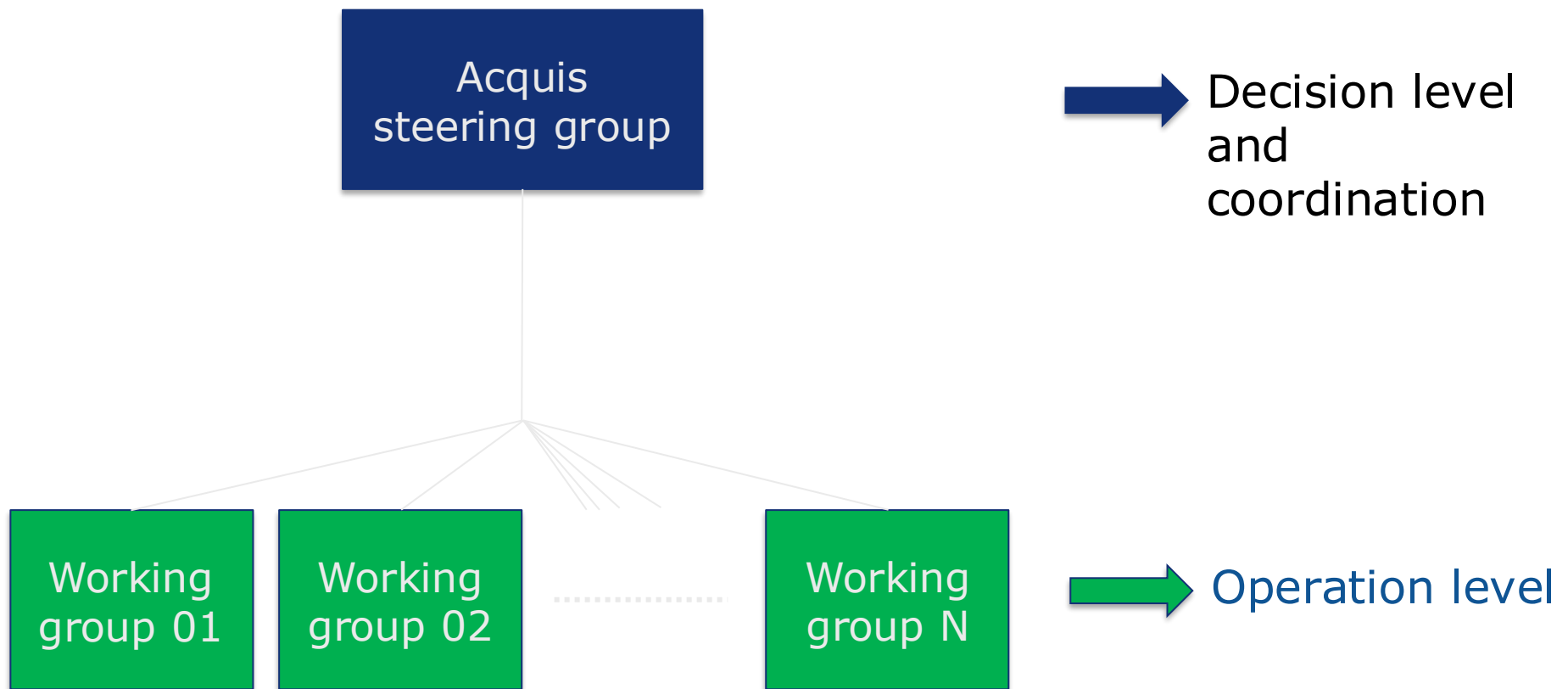
Hoe ziet de commissie dit...

Productgroepen indelen;
Prioriteiten stellen;
Tijdschema van jaren...



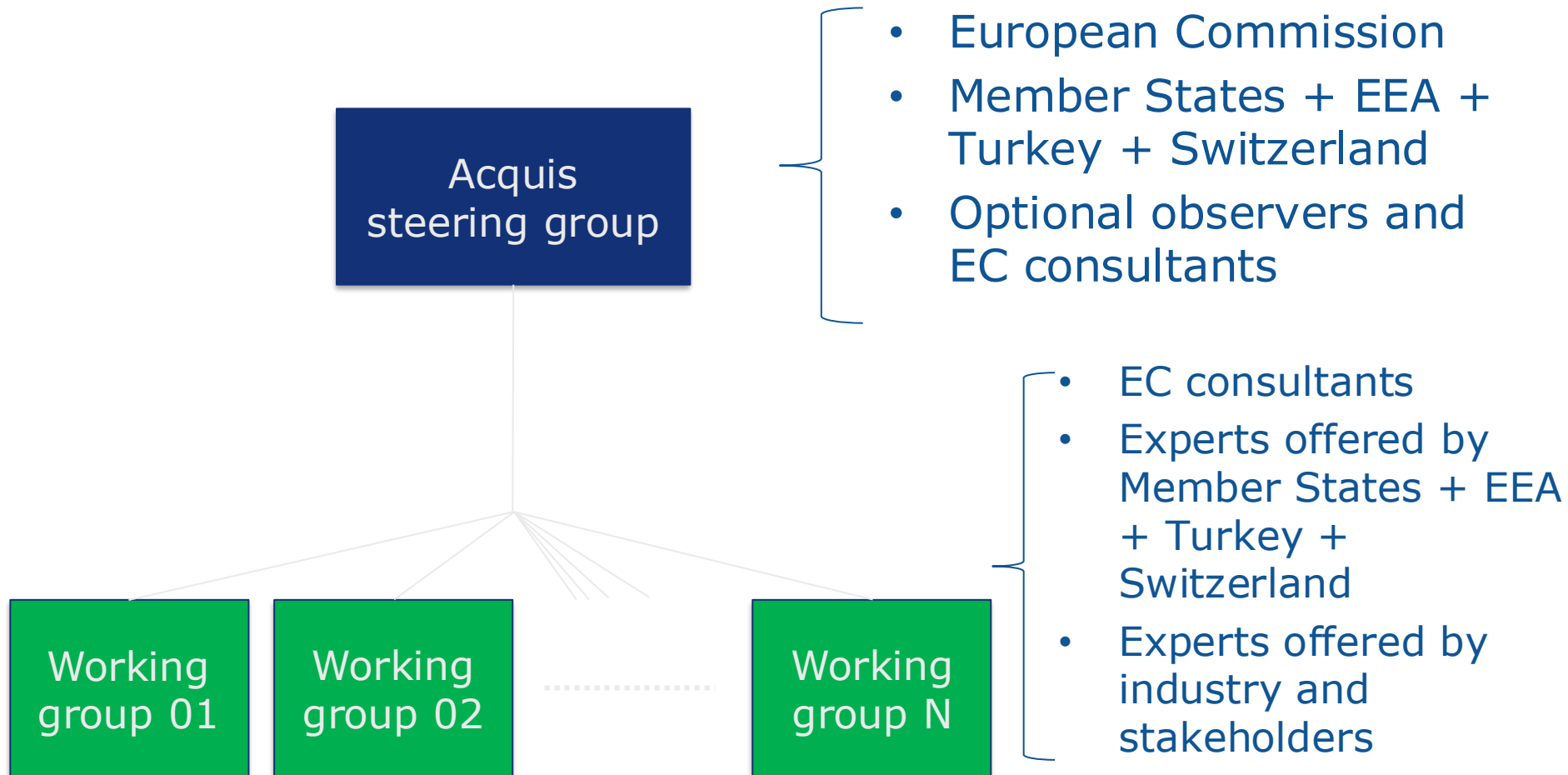


Governance





Governance





Experts made available

- 14 Members offered experts (BE, BG, CZ, DK, FI, HU, LV, PL, PT, ES, CH, FR, NL, IR);
- 1 Member State announced that the matrix of experts is coming (DE);
- 1 Member State confirmed the intention to offer experts, but is still organising its offices (IT);
- 7 Member states are not in the position to contribute with experts (SE, GR, CY, MT, AT, SI, HR);
- 5 Member States did not reply (RO, LUX, LT, EE, SK).

Experts made available

- In total more than 150 experts have been offered.
- In total more than 250 contributions have been offered.
- There are more than 10 experts for each of the 10 top priorities identified with Member States.
- 4 Member States offered experts to coordinate working groups (ES, FI, BE, LV).

Experts made available

Rank	Product families	Coordinators	Main contributors	Active inputs	Written inputs	TOT
1	M100 Precast concrete	2	2	9	3	16
2	M120 Structural metallic	2	2	7	3	14
3	M115 Reinforcing steel	2	2	6	5	15
4	M101 Doors, windows	2	3	7	7	19
5	M114 Cement	3	3	4	4	14
6	M103 Thermal insulating	2	4	7	4	17
7	M112 Structural timber	2	2	3	3	10
8	M128 Concrete, mortar &	2	3	8	4	17
9	M116 Masonry	2	2	9	4	17
10	M125 Aggregates	2	2	4	3	11
11	M109 Fixed fire fighting	0	2	2	1	5
12	M124 Road construction	1	1	1	0	3
13	M119 Floorings	1	2	3	0	6
14	M489 ETICS	1	3	1	4	9
15	M108 Curtain walling	2	2	2	3	9
16	M113 Wood based panels	2	2	0	0	4
17	M104 Structural bearings	0	1	1	0	2
18	Kits and assembled products	0	1	0	0	1
19	M121 Wall and ceiling finishes	1	2	7	2	12
20	M129 Space heating	0	2	3	0	5
21	M122 Roof coverings	1	3	8	0	12
22	M111 Circulation fixtures	0	1	2	0	3
23	M118 Waste water disposal	1	1	1	0	3
24	M127 Adhesive	1	1	1	0	3
25	M106 Gypsum	1	2	3	0	6
26	Anchors and fasteners	0	1	1	2	4
27	M102 Floor beds, roads and	1	2	7	0	10
28	M135 Glass	1	2	0	1	4
29	M107 Geotextiles	0	1	0	0	1
30	M110 Sanitary appliances	1	2	1	0	4
31	M131 Pipes, tanks not in	2	2	1	0	5
32	M443 power, control and	1	2	3	2	8
33	M105 Chimney	1	2	2	0	5
34	M474 Sealants for non-	0	1	1	0	2
	Other families	2	5	1	1	9
	TOT Experts	42	71	116	56	285

The table shows the product families as prioritized with the experts made available.

We have two kind of observations:

- On possible interactions among product families;
- On the alignment of product families as given by old mandates, with the product families listed in Annex IV to the CPR;

Experts made available

Rank	Product families	Coordinators	Main contributors	Active inputs	Written inputs	TOT
1	M100 Precast concrete	2	2	9	3	16
2	M120 Structural metallic	2	2	7	3	14
3	M115 Reinforcing steel	2	2	6	5	15
4	M101 Doors, windows	2	3	7	7	19
5	M114 Cement	3	3	4	4	14
6	M103 Thermal insulating	2	4	7	4	17
7	M112 Structural timber	2	2	3	3	10
8	M128 Concrete, mortar &	2	3	8	4	17
9	M116 Masonry	2	2	9	4	17
10	M125 Aggregates	2	2	4	3	11
11	M109 Fixed fire fighting	0	2	2	1	5
12	M124 Road construction	1	1	1	0	3
13	M119 Floorings	1	2	3	0	6
14	M489 ETICS	1	3	1	4	9
15	M108 Curtain walling	2	2	2	3	9
16	M113 Wood based panels	2	2	0	0	4
17	M104 Structural bearings	0	1	1	0	2
18	Kits and assembled products	0	1	0	0	1
19	M121 Wall and ceiling finishes	1	2	7	2	12
20	M129 Space heating	0	2	3	0	5
21	M122 Roof coverings	1	3	8	0	12
22	M111 Circulation fixtures	0	1	2	0	3
23	M118 Waste water disposal	1	1	1	0	3
24	M127 Adhesive	1	1	1	0	3
25	M106 Gypsum	1	2	3	0	6
26	Anchors and fasteners	0	1	1	2	4
27	M102 Floor beds, roads and	1	2	7	0	10
28	M135 Glass	1	2	0	1	4
29	M107 Geotextiles	0	1	0	0	1
30	M110 Sanitary appliances	1	2	1	0	4
31	M131 Pipes, tanks not in	2	2	1	0	5
32	M443 power, control and	1	2	3	2	8
33	M105 Chimney	1	2	2	0	5
34	M474 Sealants for non-	0	1	1	0	2
	Other families	2	5	1	1	9
	TOT Experts	42	71	116	56	285

Rank	Product families
1	M100 Precast concrete
2	M120 Structural metallic
3	M115 Reinforcing steel
4	M101 Doors, windows
5	M114 Cement
6	M103 Thermal insulating
7	M112 Structural timber
8	M128 Concrete, mortar &
9	M116 Masonry
10	M125 Aggregates

interactions

Area Code 1: PRECAST
NORMAL/LIGHTWEIGHT/ AUTOCLAVED
AERATED CONCRETE PRODUCTS. (Annex
IV to the CPR)

Experts made available

alignment

interactions

alignment

alignment

alignment

alignment

Rank	Product families	Coordinators	Main contributors	Active inputs	Written inputs	TOT
1	M100 Precast concrete	2	2	9	3	16
2	M120 Structural metallic	2	2	7	3	14
3	M115 Reinforcing steel	2	2	6	5	15
4	M101 Doors, windows	2	3	7	7	19
5	M114 Cement	3	3	4	4	14
6	M103 Thermal insulating	2	4	7	4	17
7	M112 Structural timber	2	2	3	3	10
8	M128 Concrete, mortar &	2	3	8	4	17
9	M116 Masonry	2	2	9	4	17
10	M125 Aggregates	2	2	4	3	11
11	M109 Fixed fire fighting	0	2	2	1	5
12	M124 Road construction	1	1	1	0	3
13	M119 Floorings	1	2	3	0	6
14	M489 ETICS	1	3	1	4	9
15	M108 Curtain walling	2	2	2	3	9
16	M113 Wood based panels	2	2	0	0	4
17	M104 Structural bearings	0	1	1	0	2
18	Kits and assembled products	0	1	0	0	1
19	M121 Wall and ceiling finishes	1	2	7	2	12
20	M129 Space heating	0	2	3	0	5
21	M122 Roof coverings	1	3	8	0	12
22	M111 Circulation fixtures	0	1	2	0	3
23	M118 Waste water disposal	1	1	1	0	3
24	M127 Adhesive	1	1	1	0	3
25	M106 Gypsum	1	2	3	0	6
26	Anchors and fasteners	0	1	1	2	4
27	M102 Floor beds, roads and	1	2	7	0	10
28	M135 Glass	1	2	0	1	4
29	M107 Geotextiles	0	1	0	0	1
30	M110 Sanitary appliances	1	2	1	0	4
31	M131 Pipes, tanks not in	2	2	1	0	5
32	M443 power, control and	1	2	3	2	8
33	M105 Chimney	1	2	2	0	5
34	M474 Sealants for non-	0	1	1	0	2
	Other families	2	5	1	1	9
	TOT Experts	42	71	116	56	285

Area code 4

Product Area:

THERMAL INSULATION PRODUCTS.
COMPOSITE INSULATING KITS/SYSTEMS.
(Annex IV to the CPR)

Area code 23

Product Area:

ROAD CONSTRUCTION PRODUCTS
(Annex IV to the CPR)

For more details see the map of hTSs for
Construction Products.



Structure and targets for the working groups.



Main goals:

Product information that is useful and complete for end-users to select, install, maintain, replace and recycle a construction product

Harmonised technical specifications as complete package (product hTS + supporting TSs)

As comprehensive as possible (to be adapted after decisions of regulators are finalised)



How to achieve it?

- Structure for working groups
- Supporting structure (coordination)
- Tasks for working groups
- Defining output (hTS and supporting TS)
- Timeline



Tasks for working groups

- Horizontal aspects (assessment; coordination)
 - Work plan/distribution of tasks
 - Milestones
- Product information
 - Product description
 - Intended use(s)
 - Installation/maintenance/de-construction
 - Performance data



Timeline plan for the working groups.



1st Period

Axis of time

WP stage 1

WP stage 2

WP stage 3

WP stage 4

Axis of Work Programme's stages

1st Period

Axis of time

WP stage 1

WG
01

WG
02

WP stage 2

WP stage 3

WP stage 4

Axis of Work Programme's stages

1st Period

2nd Period

3rd Period

4th Period

WP stage 1

WG
01

WG
02

WG
03

WG
04

WG
05

WG
06

WG
07

WG
08

WG
09

WG
10

WG
11

WP stage 2

WG
01

WG
02

WG
03

WG
04

WG
05

WG
06

WG
07

WP stage 3

WG
01

WG
02

WG
03

WG
04

WP stage 4

WG
01

WG
02



Questions from NL to the Commission:

- COM is in the 'driver's seat' of the steering group: it sets the agenda, initiates meetings and decides if the participating member states cannot reach agreement. The question arises here what the role of SCC will be?
- The working groups are not coordinated by the COM. It's a bit like self-regulation. The size / composition of these working groups can expand considerably. Hopefully it will not become a 'Babylonian confusion of tongues'.
- The tasks of the steering group include: prioritizing product families, updating hTS, proposing the content of new hTSs in case of a CPR revision ('high level structure': CO2 footprint, product safety, product info, use / reuse, installation etc ..) If the development of the 'high level structure' leads to a standardization request, the question is what CEN can do with this?
- subsidiarity (intended use, installation, maintenance, performance dat...)?!



Vragen?

<https://www.rijksoverheid.nl/onderwerpen/bouwproducten>

<https://www.kwaliteitbouwproducten.nl/>

<https://www.contactpuntbouwproducten.nl/>

